

# MONTHLY MEMBERSHIP PROGRESS REPORT

LOCATION MASSACHUSETTS

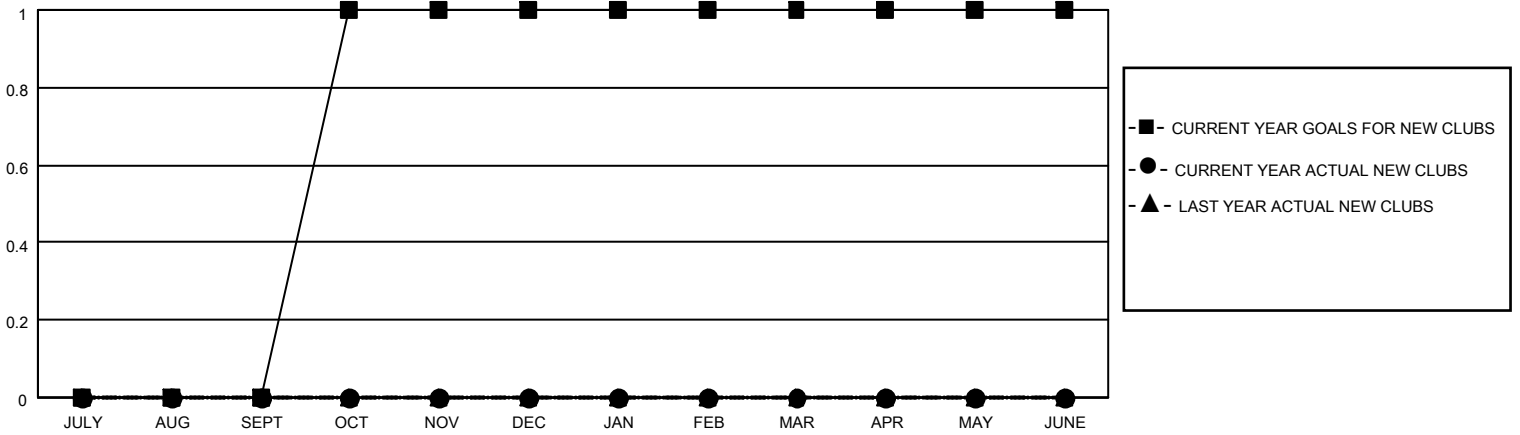
District 33 K

Results as of: 9/30/2022

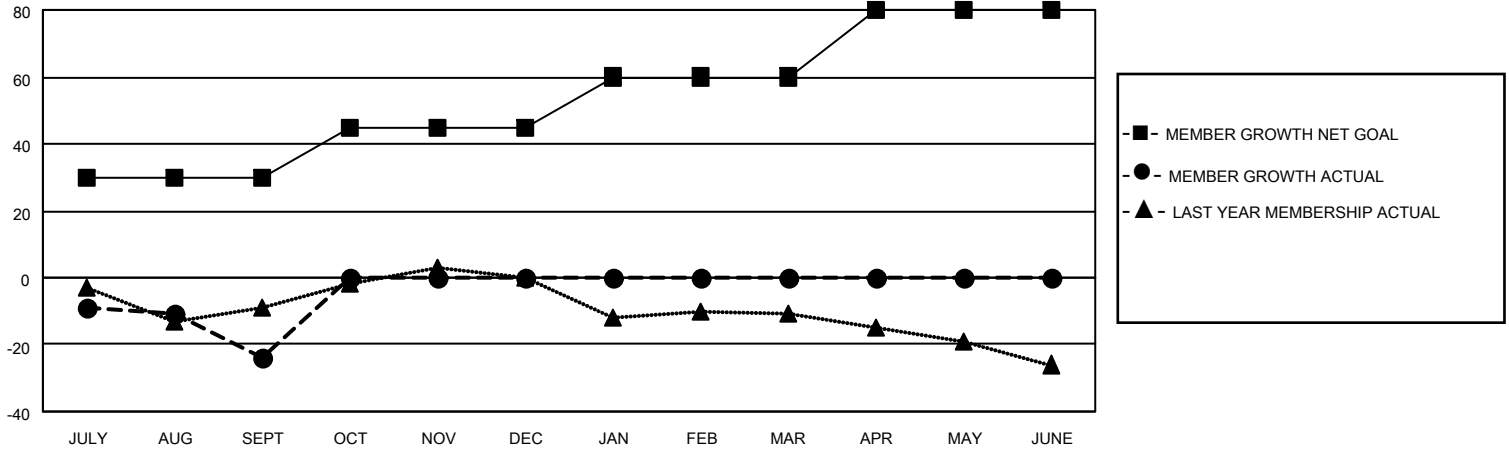
| Clubs                 |               |           |               |
|-----------------------|---------------|-----------|---------------|
| RESULTS FOR 2022-2023 |               |           |               |
| QUARTER               | NEW CLUB GOAL | NEW CLUBS | DROPPED CLUBS |
| JULY/AUG/SEPT         | 0             | 0         | 0             |
| OCT/NOV/DEC           | 1             | 0         | 0             |
| JAN/FEB/MAR           | 0             | 0         | 0             |
| APR/MAY/JUNE          | 0             | 0         | 0             |

| Members               |                        |                      |   |
|-----------------------|------------------------|----------------------|---|
| RESULTS FOR 2022-2023 |                        |                      |   |
| QUARTER               | MEMBER GROWTH NET GOAL | MEMBER GROWTH ACTUAL | DROPPED MEMBERS ACTUAL<br>(including transfers) |
| JULY/AUG/SEPT         | 30                     | 8                    | 32  |
| OCT/NOV/DEC           | 15                     | 0                    | 0   |
| JAN/FEB/MAR           | 15                     | 0                    | 0   |
| APR/MAY/JUNE          | 20                     | 0                    | 0   |

**GOALS AND ACTUAL NEW CLUBS CUMULATIVE**



**GOALS AND ACTUAL MEMBERS CUMULATIVE**



**DROPPED CLUBS: 0**

**6 CLUBS OF 47 ADDED 1 OR MORE NEW MEMBERS**

**GENDER DISTRIBUTION**

|                      |                |
|----------------------|----------------|
| MALE                 | 1,005 (64.01%) |
| FEMALE               | 564 (35.92%)   |
| NON BINARY           | 0 (0.00%)      |
| PREFER NOT TO ANSWER | 1 (0.06%)      |

**DROPPED MEMBERS**

[CLICK HERE FOR CUMULATIVE MEMBERSHIP DATA](#)

|                |           |
|----------------|-----------|
| DECEASED       | 5         |
| CLUB CANCELLED | 0         |
| OTHER          | 27        |
| <b>TOTAL</b>   | <b>32</b> |

TOTAL FAMILY UNIT MEMBERS 202

FAMILY MEMBERS PAYING HALF DUES 101